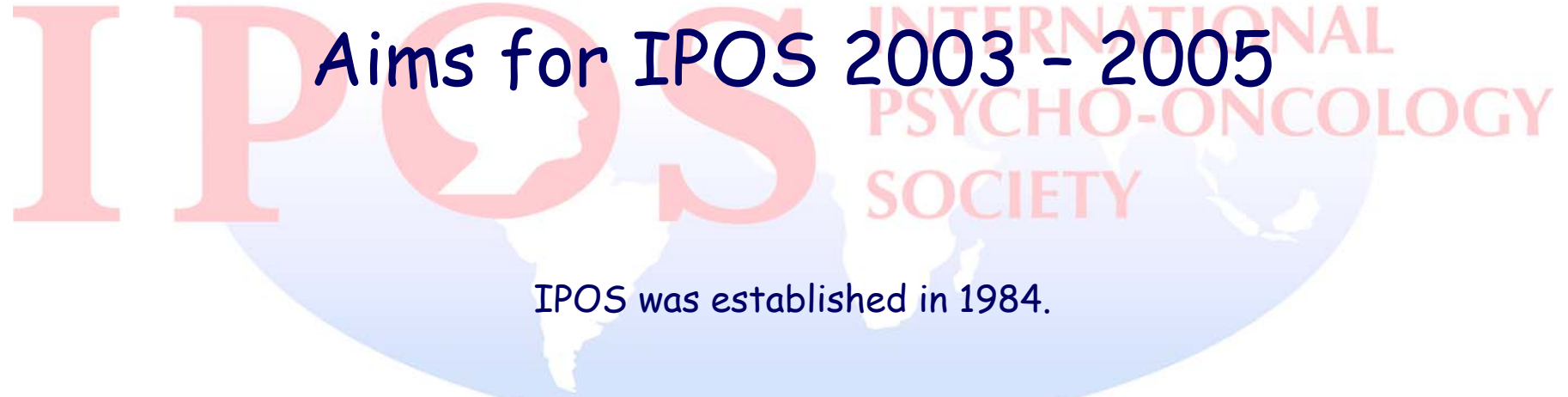


Aims for IPOS 2003 - 2005



IPOS was established in 1984.

- To foster international multidisciplinary communication about clinical, educational and research issues that relate to the subspecialty of psycho-oncology and two primary psychosocial dimensions of cancer:
- Response of patients, families and staff to cancer and its treatment at all stages
- Psychological, social and behavioural factors that influence tumour progression and survival
- Membership is open to individuals with a diversity of clinical and research backgrounds. These include, but are not limited to, physicians, social workers, nurses, psychologists, rehabilitation specialists, epidemiologists, social scientists, and educators.



Aims for IPOS 2003 - 2005



- Bi-annual scientific world conferences organised in collaboration between IPOS and local psychosocial organisations
- Work to become a non-governmental organisation (NGO) in relation to WHO in order to become a partner in the ongoing policy development within WHO in relation the prevention and treatment of cancer.
- The focus of the NGO activities is directed towards the definition and establishment of worldwide clinical guidelines for psychosocial support for cancer patients. Conduct of a world congress to establish clinical guidelines



Aims for IPOS 2003 - 2005



- The establishment of educational activities in collaboration with the European School of Oncology (ESO) in Milan, Italy in relation to clinical oncologists and researchers in psychosocial oncology. Will take place in Copenhagen 2004
- IPOS Centre for Education and Research (ICER) will be the umbrella covering the Curriculum in multiple languages and a Faculty of Senior Teachers
- The active participation in initiatives taken by IARC, the cancer research institute of WHO and the collaboration between UICC and WHO.
- The further development of the Journal of Psycho-Oncology, which serves as the scientific journal focused on psychosocial oncology in all aspects (current (2002) impact factor 1.388).



Aims for IPOS 2003 - 2005



- Establish an Office of National Societies (Dr Jimmie Holland) which can help new societies in the establishment of psychosocial oncology in the country or region
- Establish the necessary economic basis for the existence of IPOS
- To promote collaboration between IPOS and psychosocial societies in the emerging world - a clear strategy has to be developed

